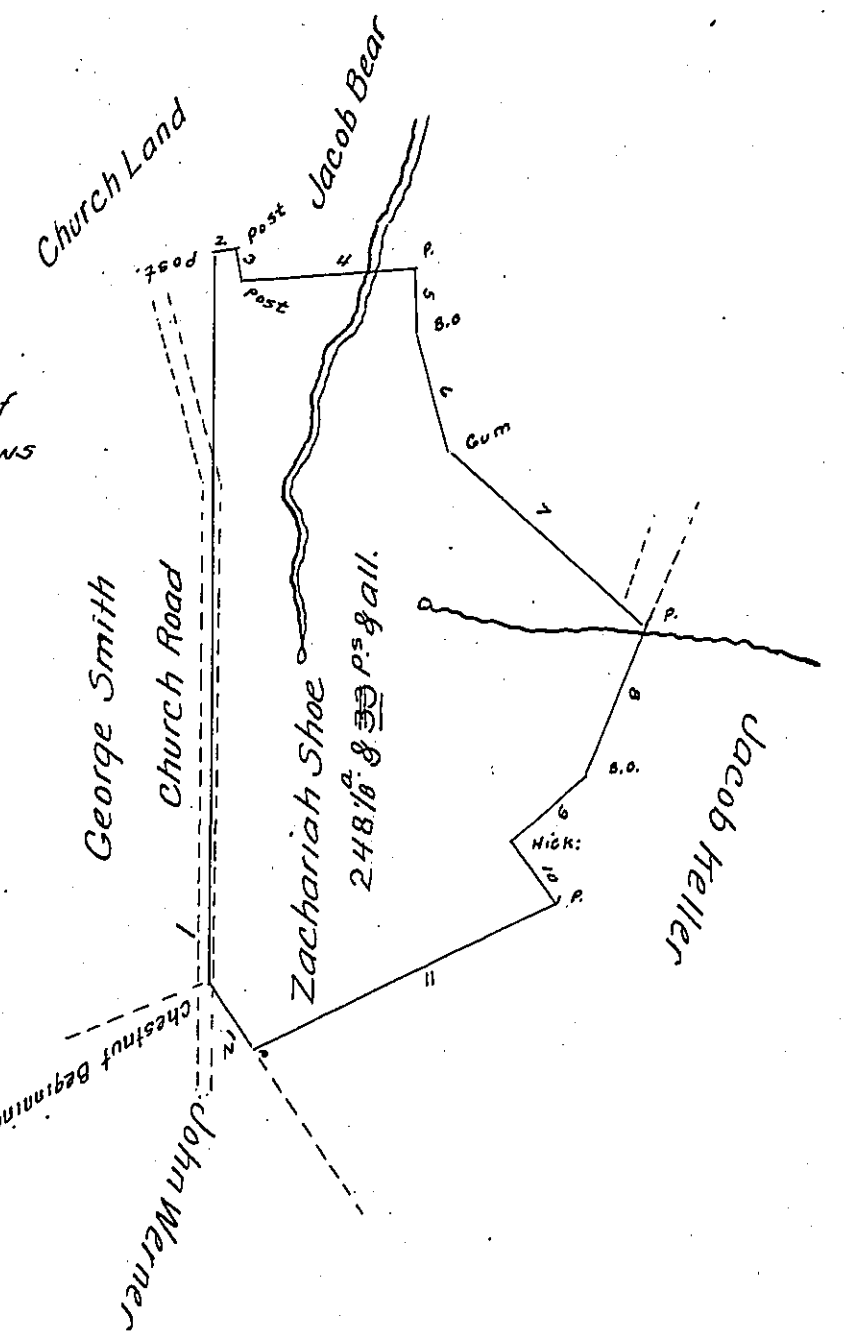


Courses beginning at a Chestnut on the East Side of the Road called the Church Road & thence as follows

- N<sup>o</sup> 1. - S. 1° W 312 P. Post
- N<sup>o</sup> 2. - S. 86° W 9 P. P.
- N<sup>o</sup> 3. - N 16° W 13 P. P.
- N<sup>o</sup> 4. - S. 84 1/4 W 77.8 P<sup>s</sup> P.
- N<sup>o</sup> 5. - N 1/4 W 26.8 P. B.O
- N<sup>o</sup> 6. - N 14 1/4 W 53.8 P. Gum
- N<sup>o</sup> 7. - N 47 3/4 W 112.4 P<sup>s</sup> P.
- N<sup>o</sup> 8. - N 23 1/4 E 68.9 P<sup>s</sup> B.O
- N<sup>o</sup> 9. - N 48° E 43. P<sup>s</sup> Hick:
- N<sup>o</sup> 10. - N 16. W 33. P. P
- N<sup>o</sup> 11. - N 64° E 130.6 P<sup>s</sup> P.
- N<sup>o</sup> 12. - S. 36 1/2 E 35.1 P<sup>s</sup> to Chestnut the place of Beginning.



Situated in Codorus Township York County & Surveyed the 23<sup>d</sup> day of June 1785 in pursuance of a Warrant dated 19<sup>th</sup> October 1784.

By Moses McClean D. S.

To John Lukens Esq. Surveyor Genl

IN TESTIMONY that the above is a copy of the original remaining on file in the Department of Internal Affairs of Pennsylvania, made conformably to an Act of Assembly approved the 16th day of February, 1833, I have hereunto set my Hand and caused the Seal of said Department to be affixed at Harrisburg, this eighth day of October 1906.

*Loane R. Brown*  
Secretary of Internal Affairs.